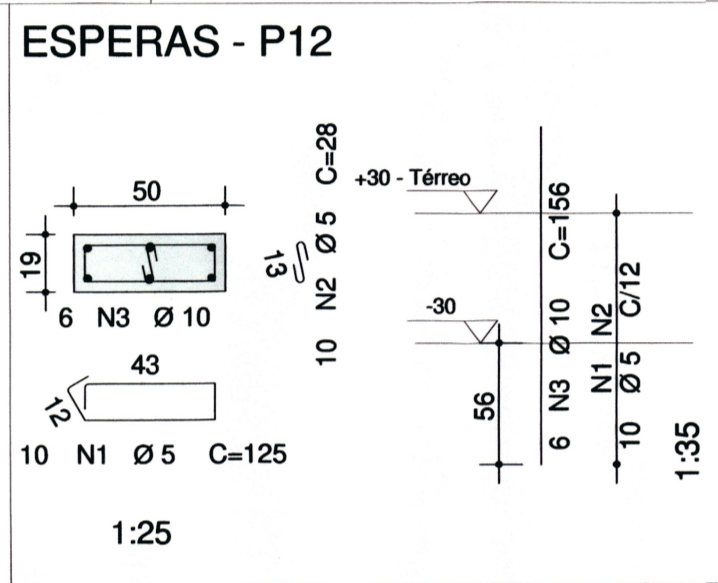
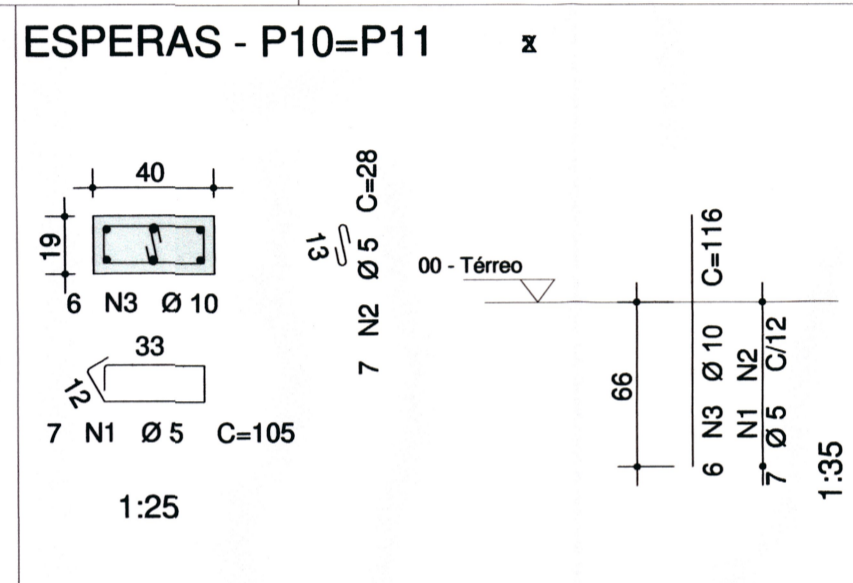
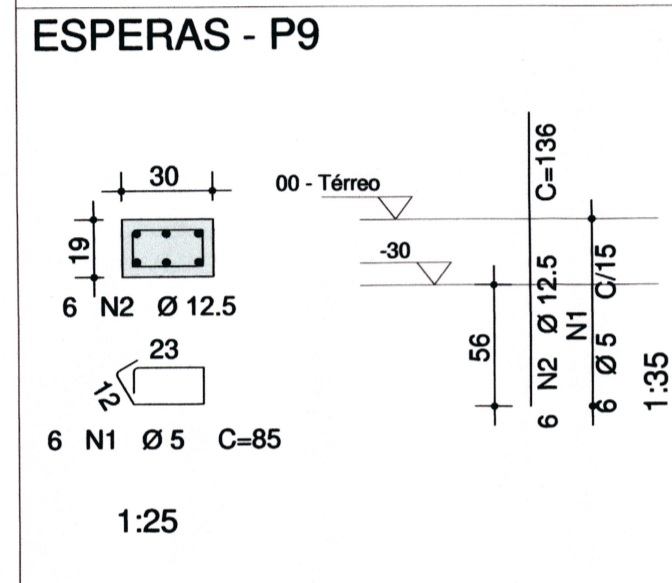
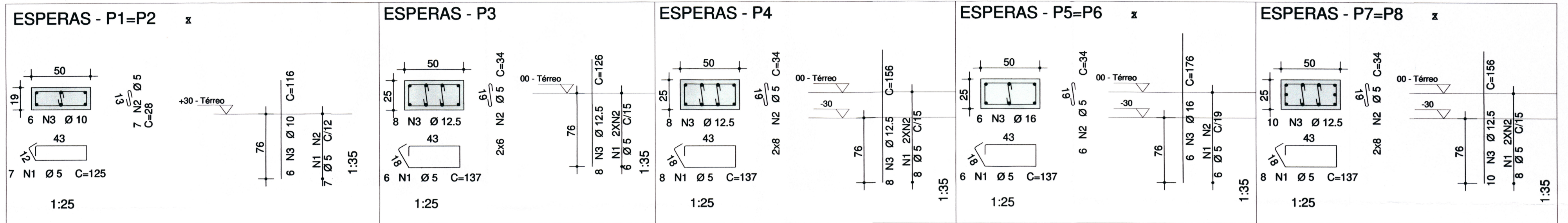
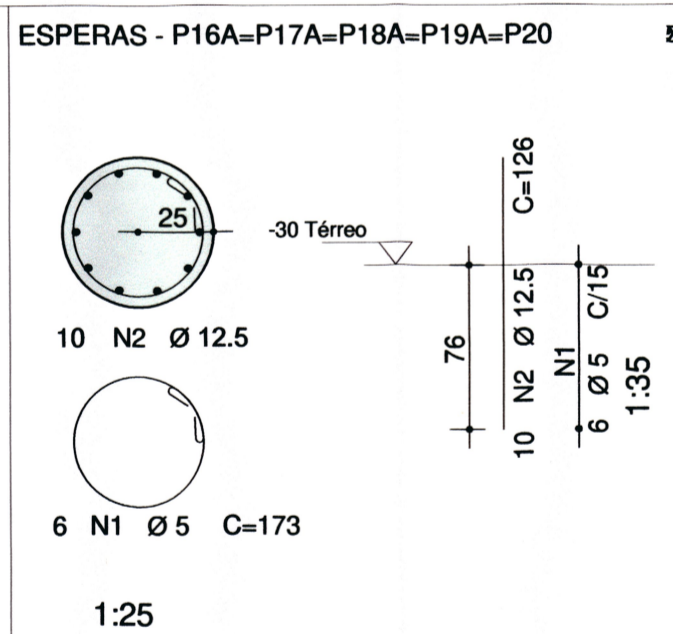
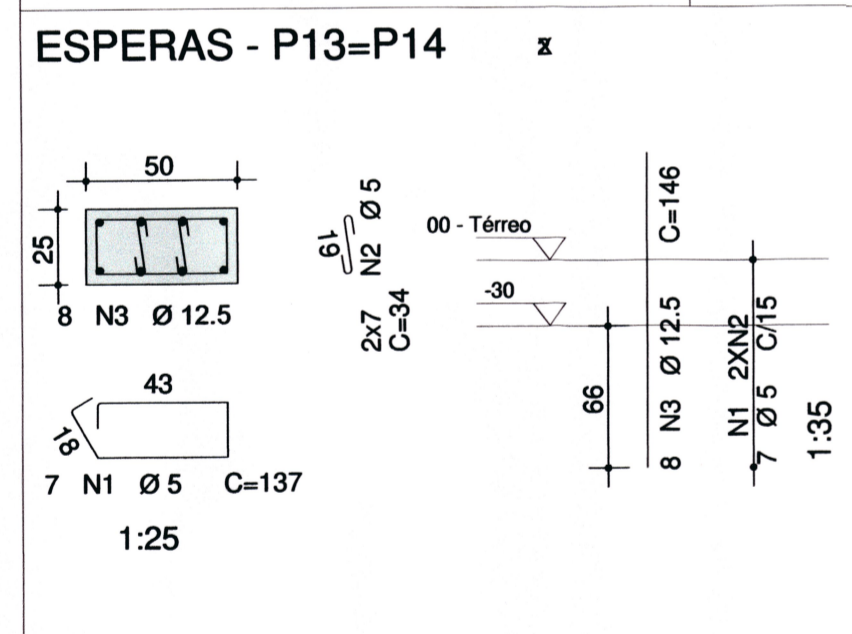


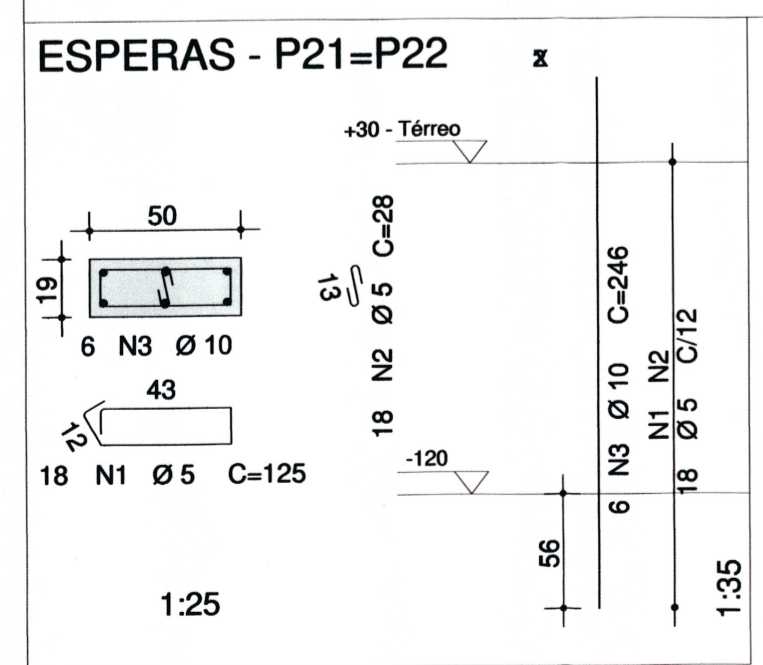
Detalhamento - Esperas Térreo



RESUMO AÇO CA 50-60			
AÇO	BIT (mm)	COMPR (m)	PESO (kg)
5	60B	278	43
10	50A	67	41
12.5	50A	148	143
16	50A	21	33
Peso Total 60B =			43 kg
Peso Total 50A =			217 kg



AÇO	POS	BIT (mm)	QUANT	COMP. UNIT (cm)
ESPERAS - P1=P2 (X2)				
60B	1	5	14	125
60B	2	5	14	28
50A	3	10	12	116
ESPERAS - P3				
60B	1	5	6	137
60B	2	5	12	34
50A	3	12.5	8	126
ESPERAS - P4				
60B	1	5	8	137
60B	2	5	16	34
50A	3	12.5	8	156
ESPERAS - P5=P6 (X2)				
60B	1	5	12	137
60B	2	5	12	34
50A	3	16	12	176
ESPERAS - P7=P8 (X2)				
60B	1	5	16	137
60B	2	5	32	34
50A	3	12.5	20	156
ESPERAS - P9				
60B	1	5	6	85
50A	2	12.5	6	136
ESPERAS - P10=P11 (X2)				
60B	1	5	14	105
60B	2	5	14	28
50A	3	10	12	116
ESPERAS - P12				
60B	1	5	10	125
60B	2	5	10	28
50A	3	10	6	156
ESPERAS - P13=P14 (X2)				
60B	1	5	14	137
60B	2	5	28	34
50A	3	12.5	16	146
ESPERAS - P16A=P17A=P18A=P19A=P20 (X5)				
60B	1	5	30	173
50A	2	12.5	50	126
ESPERAS - P21=P22 (X2)				
60B	1	5	36	125
60B	2	5	36	28
50A	3	10	12	246



Associação de Municípios do Nordeste do Estado de Santa Catarina
89216-000 - JOINVILLE - SC - Rua Max Colin, 1843 - América - Fone: 47 3433-3927
ASSESSORIA E COORDENADORIA DE PLANEJAMENTO URBANO, MUNICIPAL E REGIONAL
home page : www.amunesc.org.br CREA SC 48.925-4

Equipe Técnica:
Arquitetas: TÁBATA YUMI FUJIOKA
NATHALIA DE SOUZA ZATTAR
Engenheiras Cívicas: FÁBIO BARBI DE ALMEIDA CONSTATE
DEBORA TONINI
GABRIELA CARDOSO GUIMARÃES
Técnico em Edificações: MARCOS STADELHOFFER
Analista de Projetos: BIANCA SCHWARTZ

AMPLIAÇÃO MUSEU ARQUEOLÓGICO DE SAMBAQUI PROJETO ESTRUTURAL

PREFEITURA MUNICIPAL DE JOINVILLE

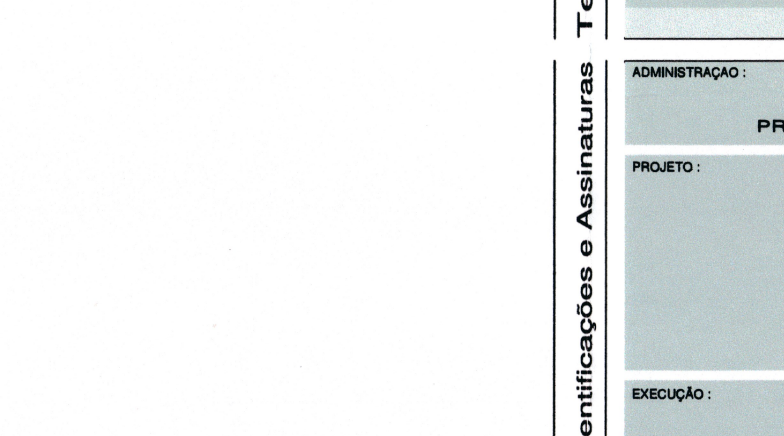
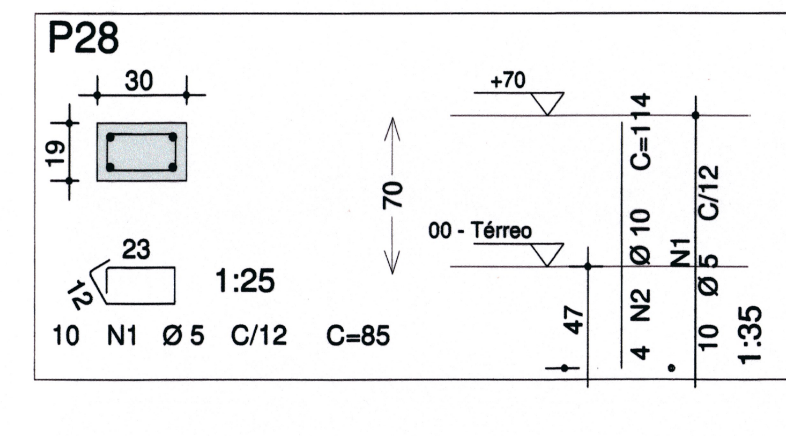
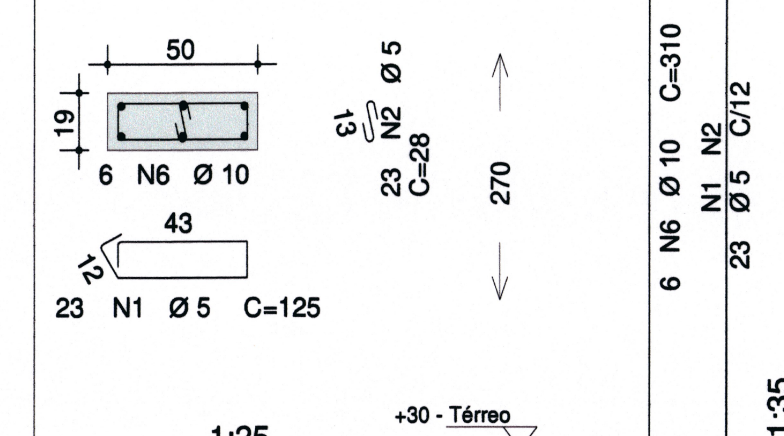
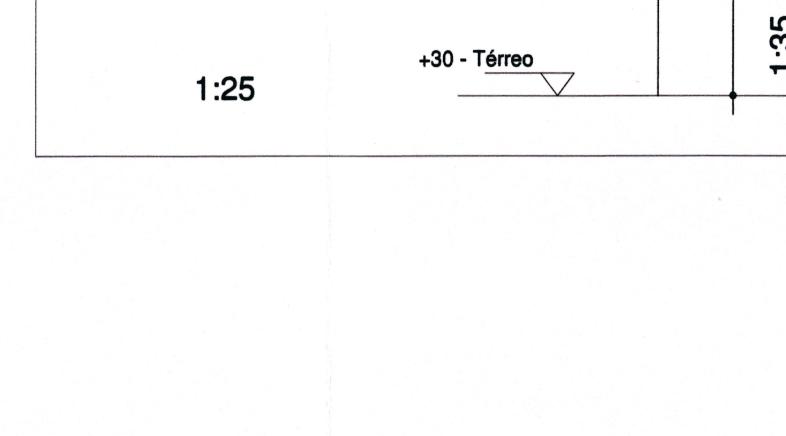
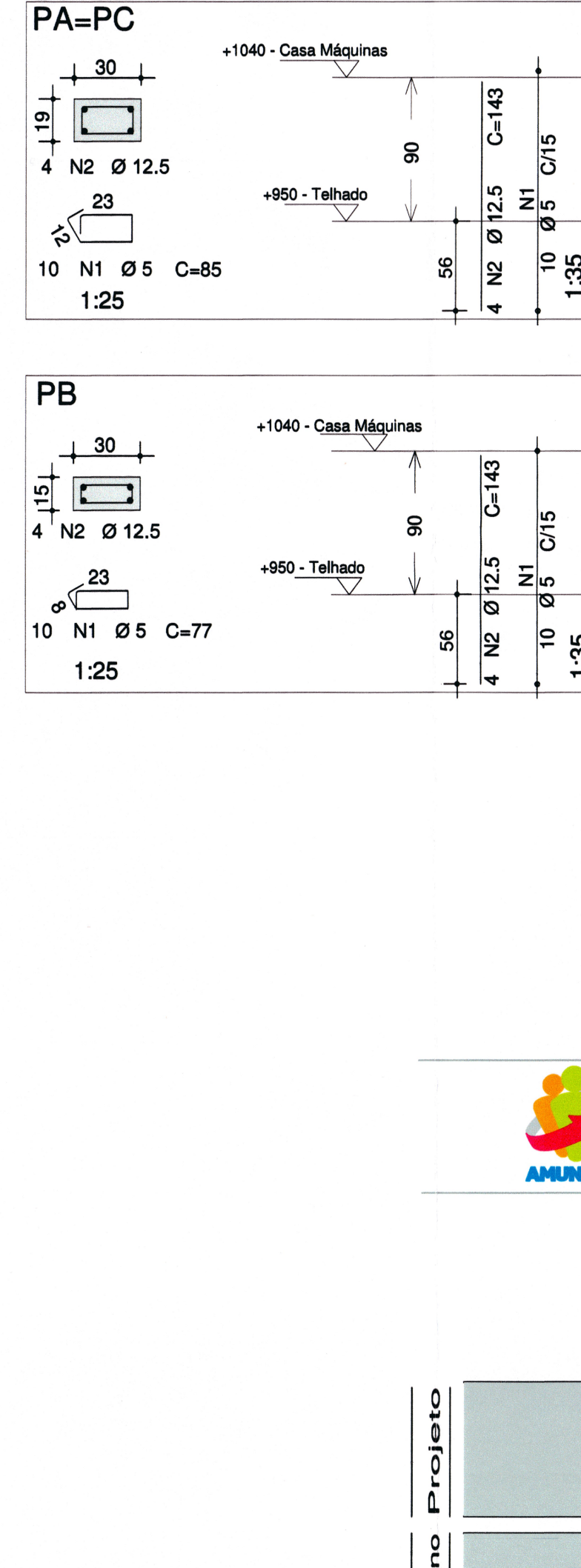
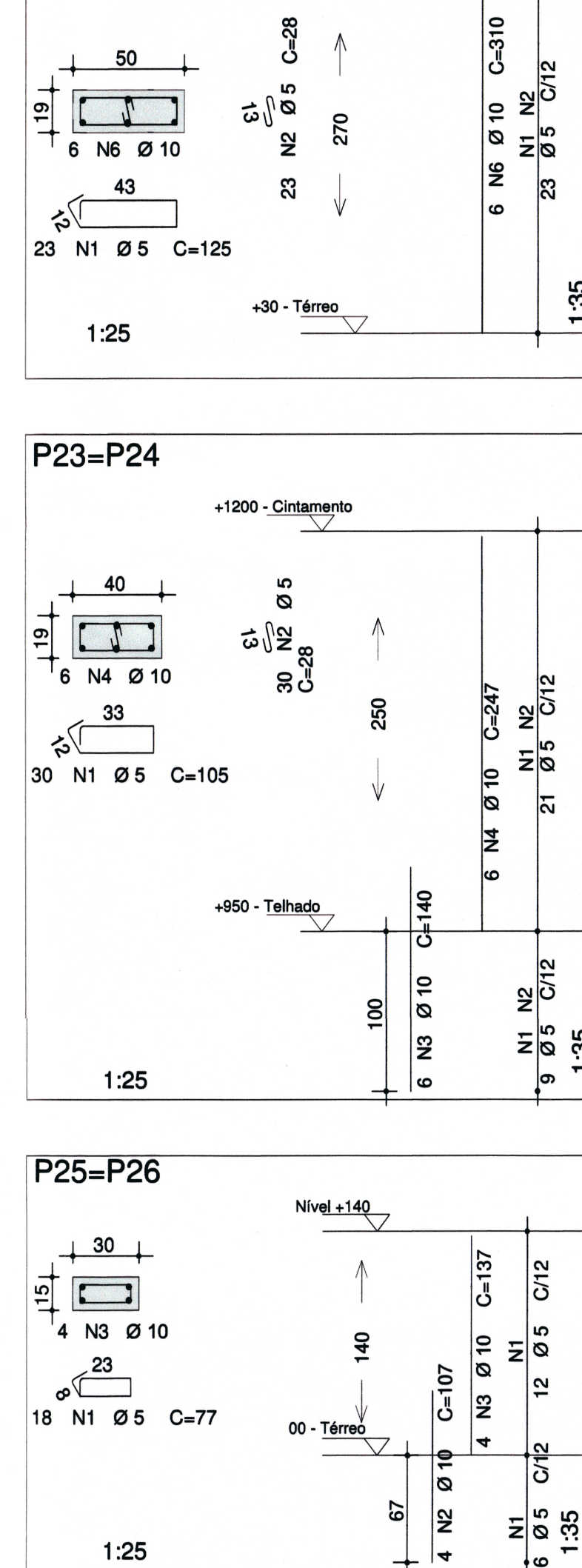
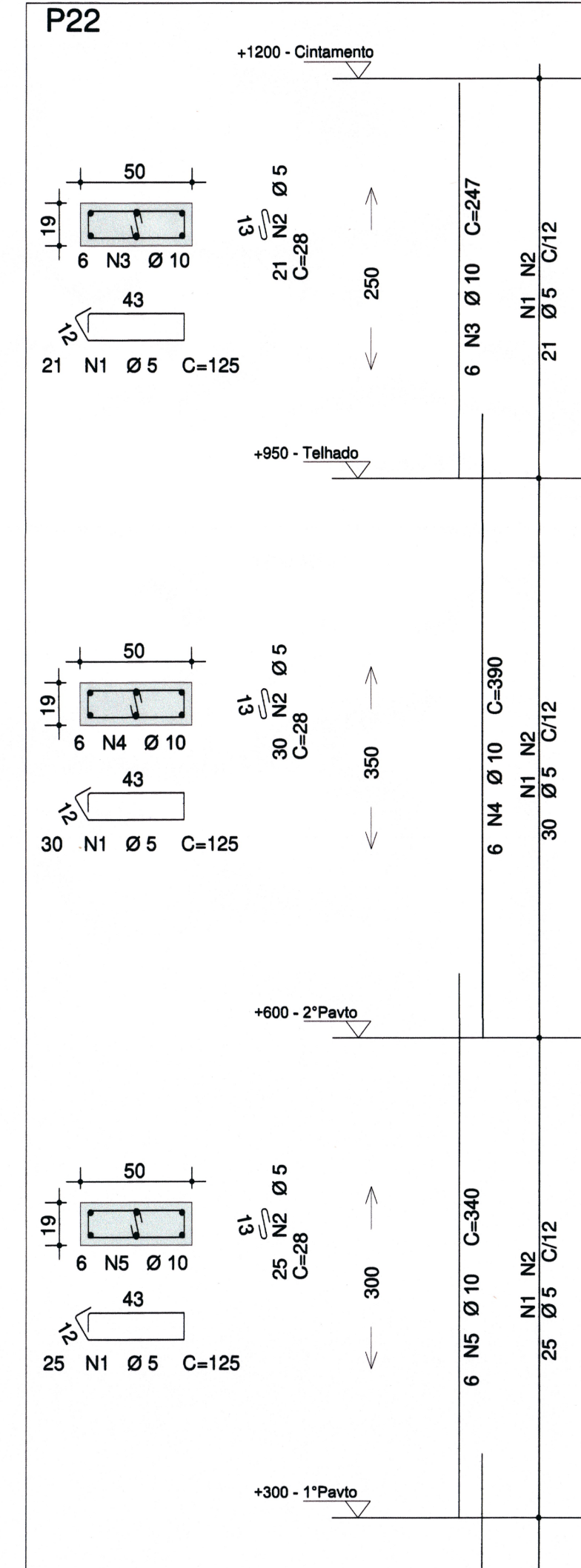
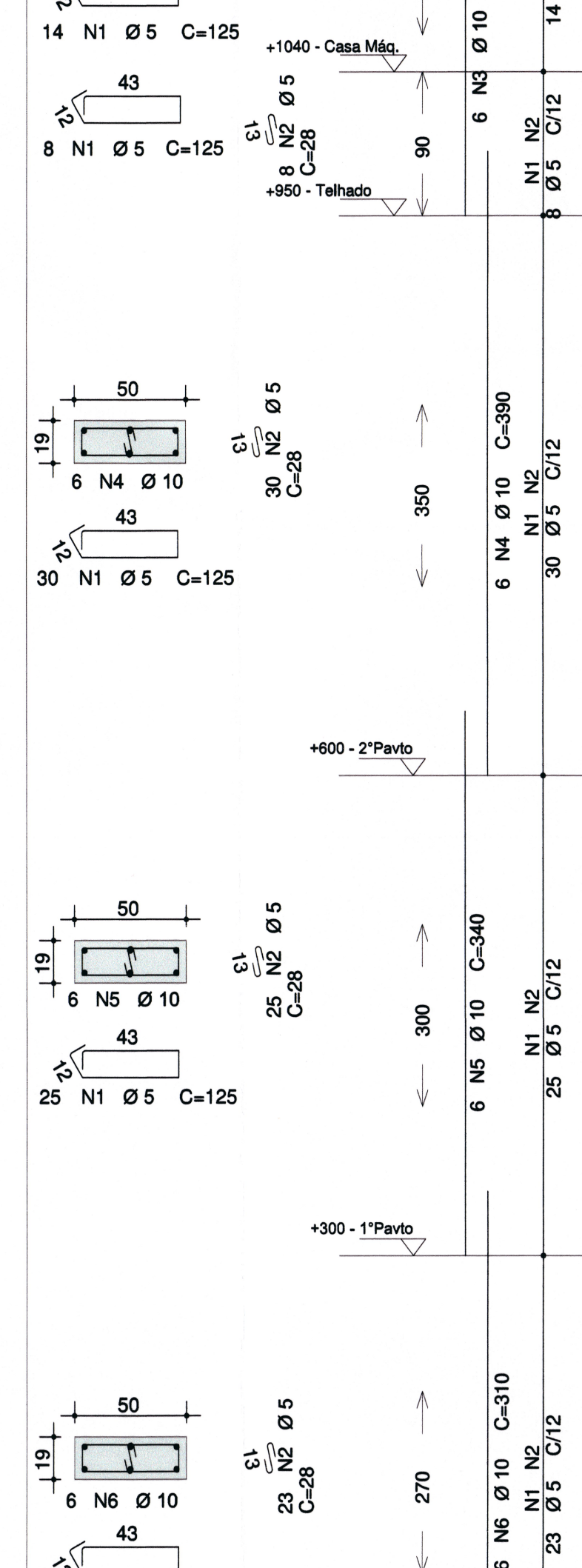
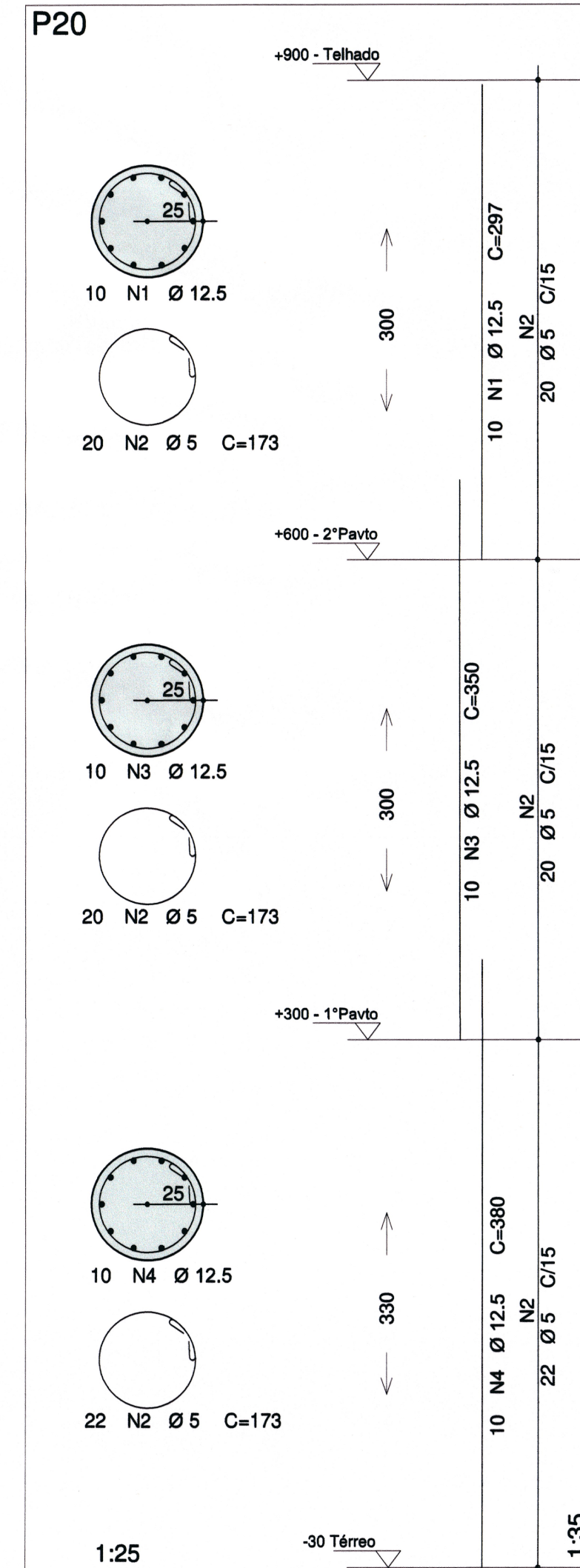
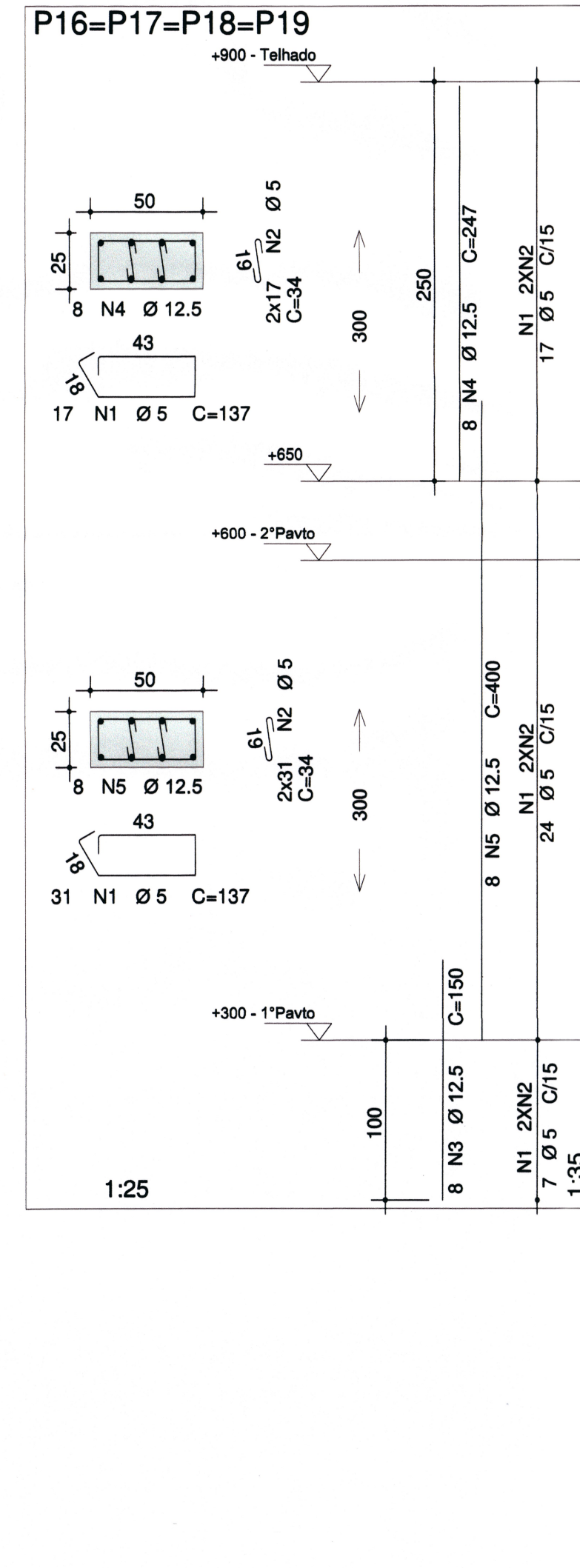
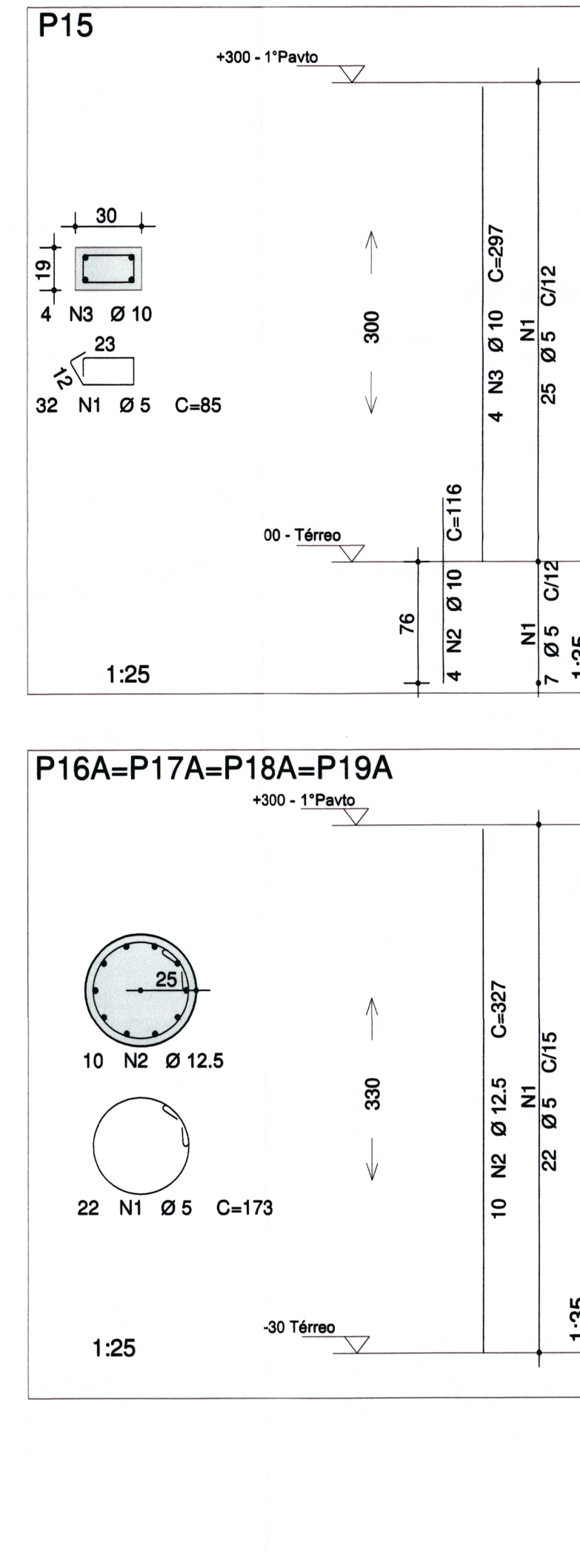
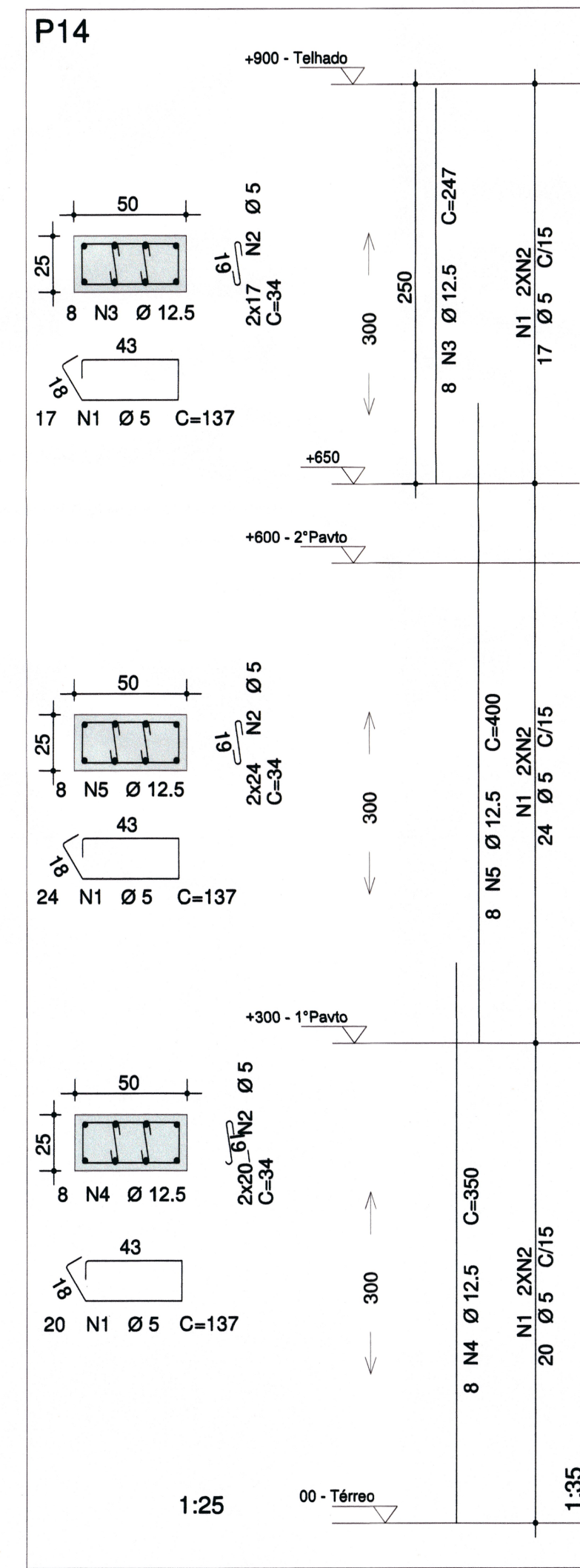
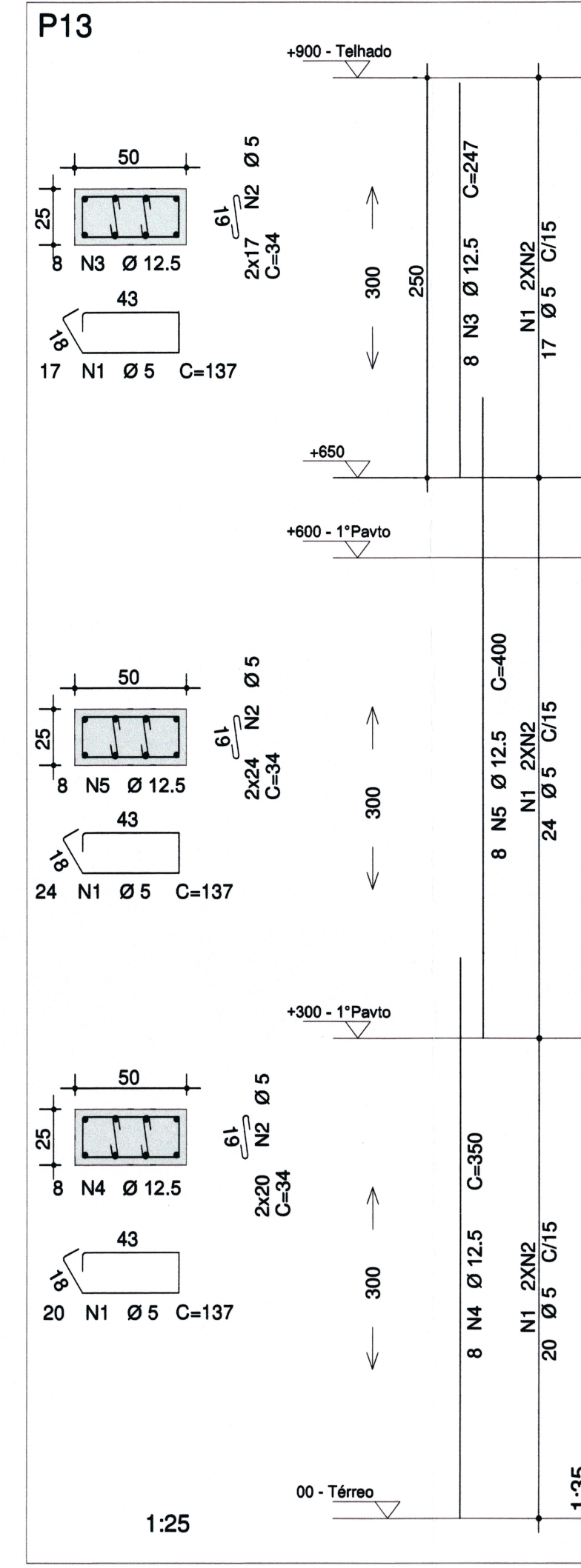
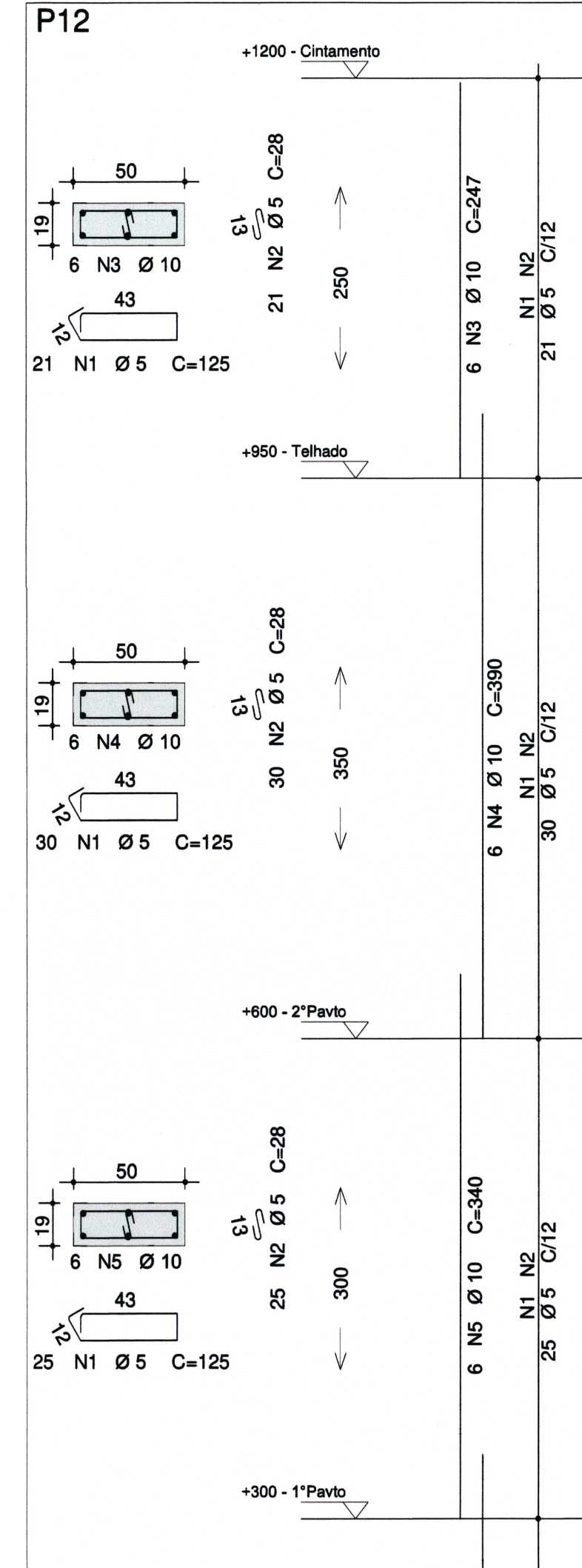
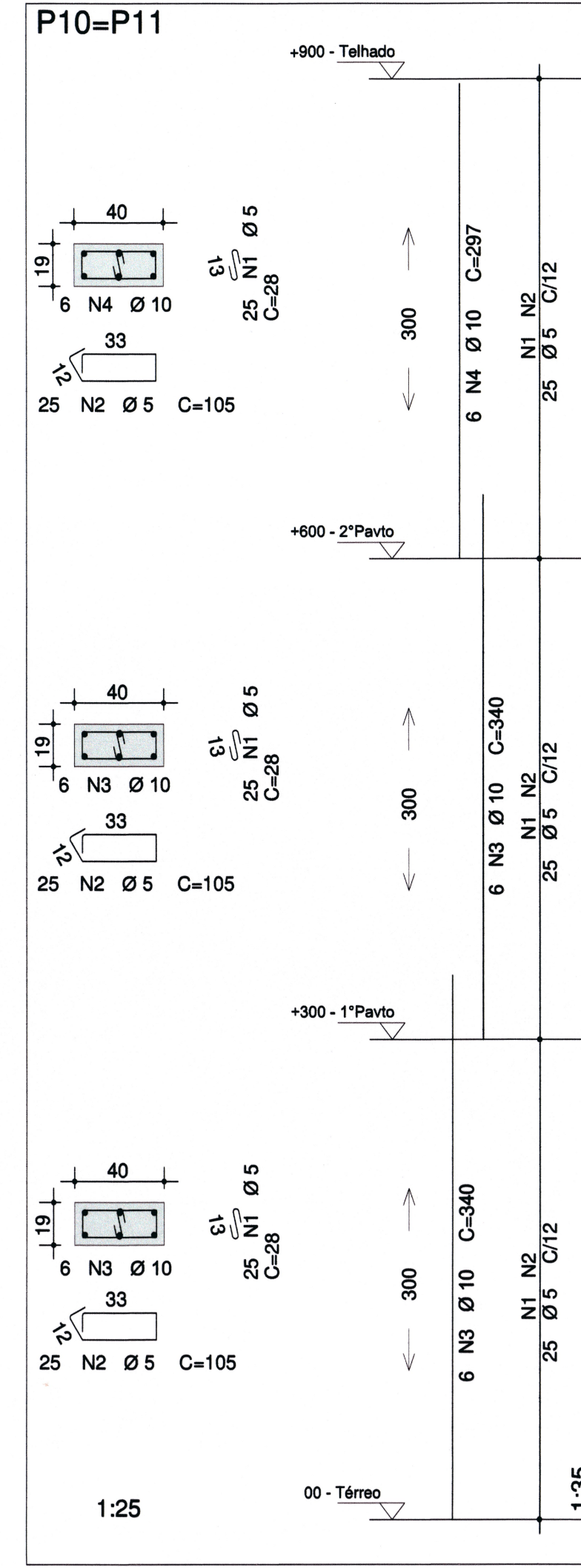
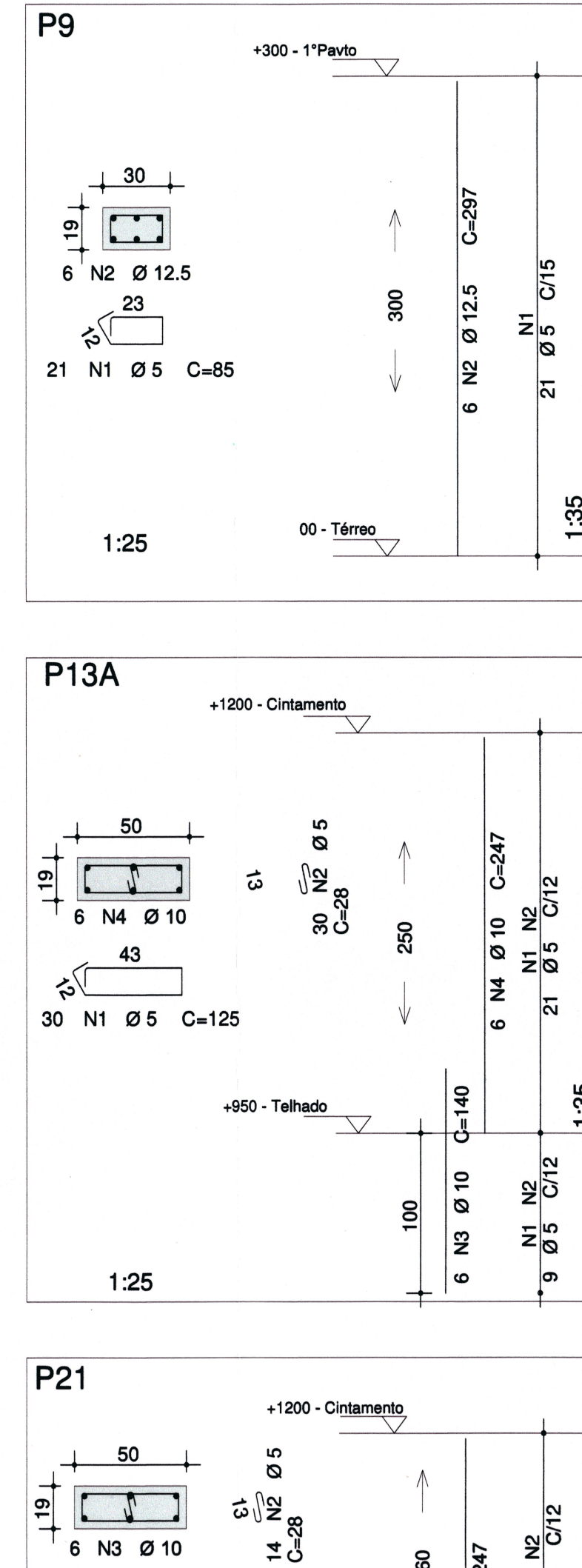
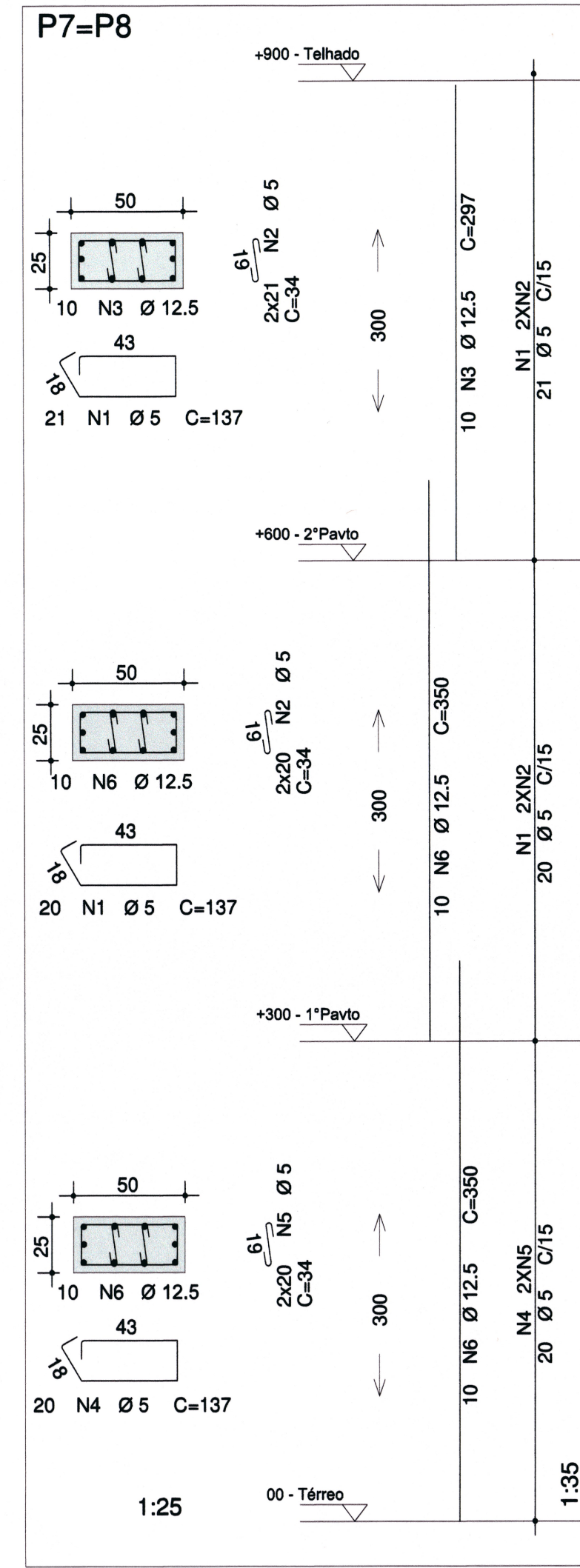
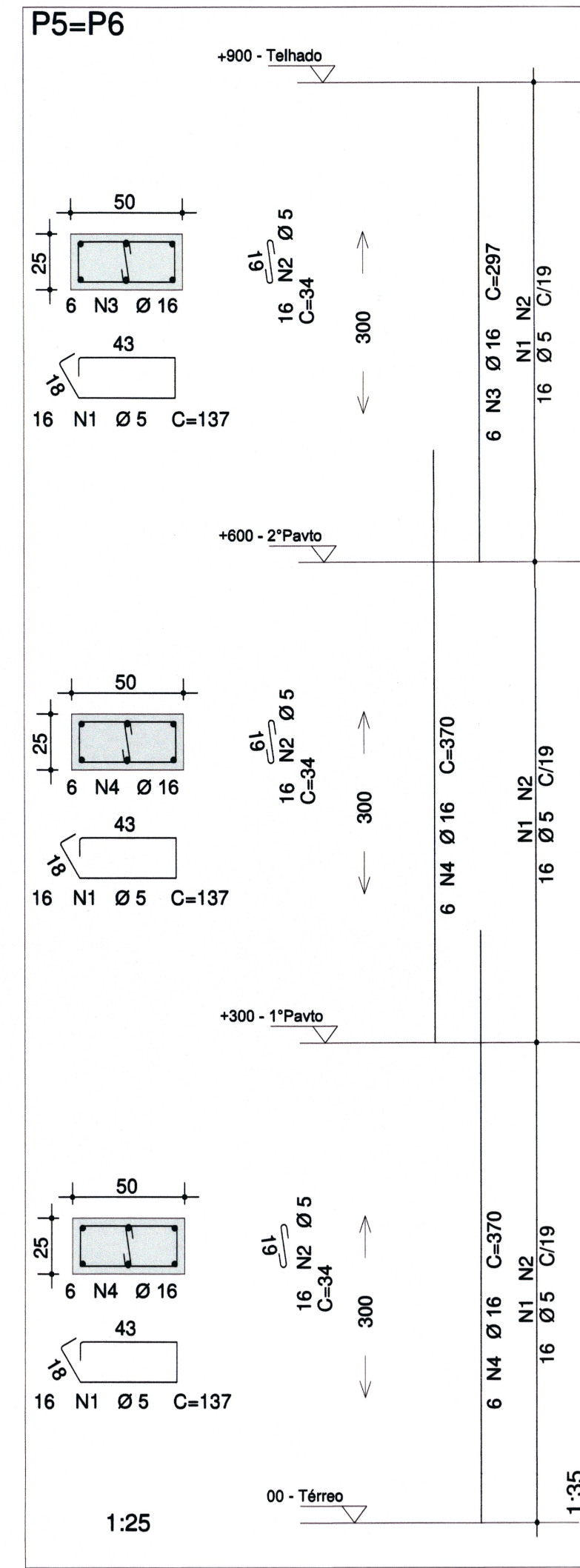
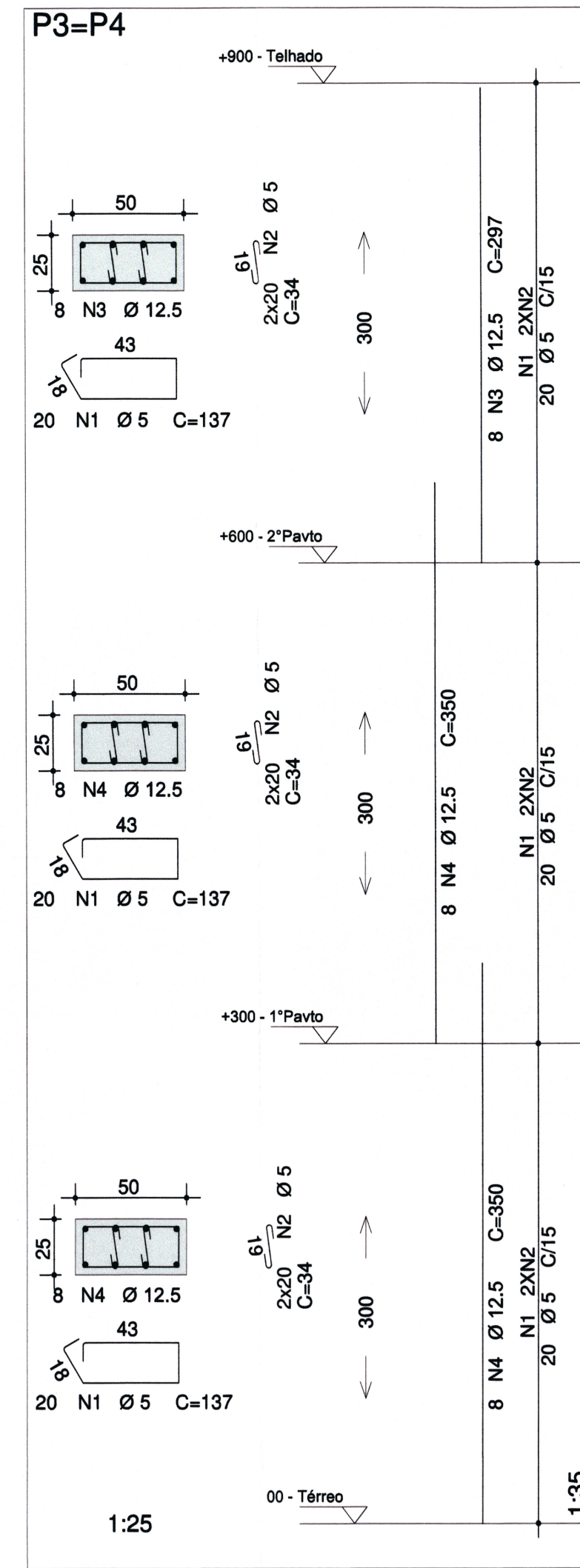
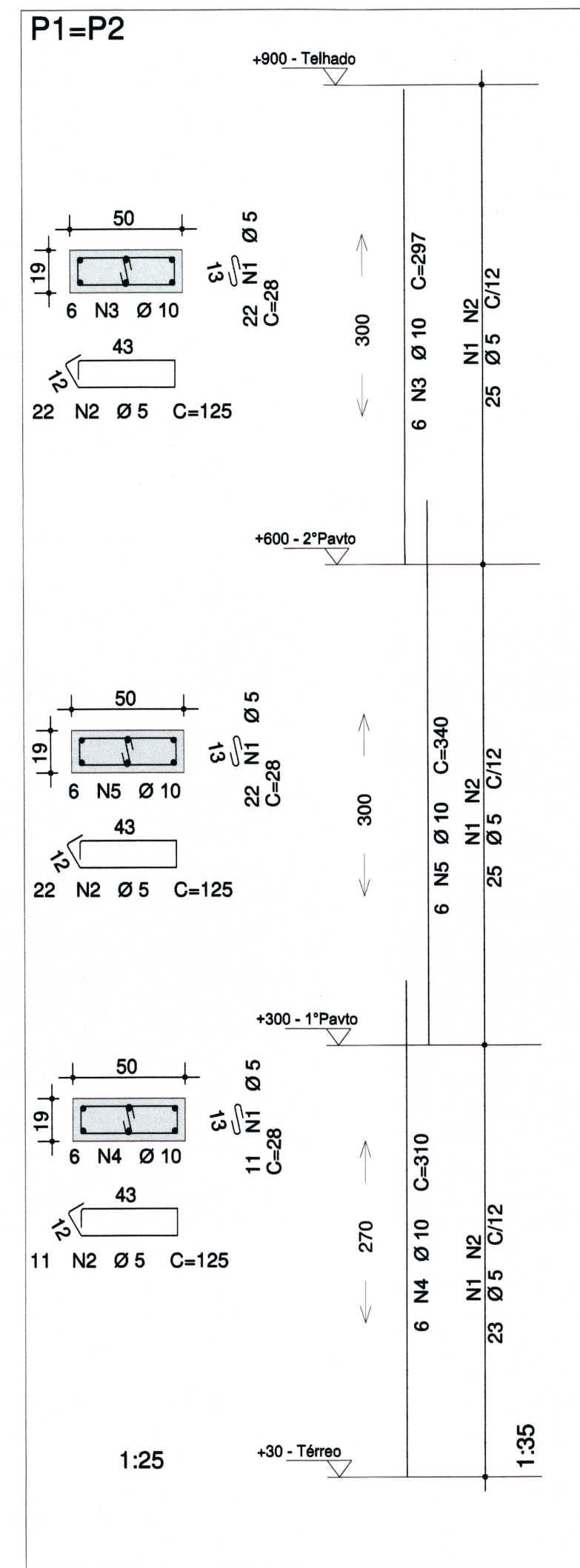
Endereço : Rua Dona Francisca, 600 - Centro - Joinville/SC

Prancha Identificações e Assinaturas

ADMINISTRAÇÃO:	ASSINATURA:
PREFEITURA MUNICIPAL DE JOINVILLE	<i>[Assinatura]</i>
PROJETO:	ASSINATURA RESPONSÁVEL PELO PROJETO:
Gabriela Cardoso Guimarães Engenheira Civil CREA 159.442-3	<i>[Assinatura]</i>
EXECUÇÃO:	ASSINATURA RESPONSÁVEL PELA EXECUÇÃO:

Informações	CONTEÚDO DA PRANCHA	NÚMERO PR.
Desenho: Gabriela	DETALHAMENTO DAS ESPERAS - TÉRREO	EST 05/15
Nome do Arquivo:		
Escala: Indicada		
Data: Janeiro/2021		

Detalhamento - Pilares



ACO	POS	BIT (mm)	QUANT	COMP. UNIT (cm)
P1=P2 (X2)				
60B	1	5	110	28
60B	2	5	110	28
50A	3	10	12	297
50A	4	10	12	310
50A	5	10	12	340
P3=P4 (X2)				
60B	1	5	120	137
60B	2	5	96	34
50A	3	12,5	16	297
50A	4	12,5	52	350
P5=P6				
60B	1	5	96	137
60B	2	5	96	34
50A	3	16	12	297
50A	4	16	24	370
P7=P8 (X2)				
60B	1	5	82	137
60B	2	5	164	34
50A	3	12,5	20	297
50A	4	5	40	137
50A	5	12,5	80	34
50A	6	12,5	32	350
P9				
60B	1	5	21	85
50A	2	12,5	6	297
P10=P11 (X2)				
60B	1	5	150	28
60B	2	5	150	105
50A	3	10	24	340
50A	4	10	12	297
P12				
60B	1	5	99	125
60B	2	5	96	247
50A	3	10	6	390
50A	4	10	6	340
50A	5	10	6	310
P13				
60B	1	5	61	137
60B	2	5	122	34
50A	3	12,5	80	147
50A	4	12,5	8	390
50A	5	12,5	8	400
P14				
60B	1	5	30	125
60B	2	5	30	28
50A	3	10	6	140
50A	4	10	6	247
P15				
60B	1	5	32	85
50A	2	10	4	216
50A	3	10	6	140
50A	4	10	6	247
P16=P17=P18=P19 (X4)				
60B	1	5	192	137
60B	2	5	96	34
50A	3	12,5	32	150
50A	4	12,5	32	247
50A	5	12,5	32	400
P16A=P17A=P18A=P19A (X4)				
60B	1	5	88	173
50A	2	12,5	40	297
P20				
60B	1	12,5	10	297
60B	2	5	82	173
50A	3	12,5	10	350
50A	4	12,5	10	380
P21				
60B	1	5	100	125
60B	2	5	100	28
50A	3	10	6	247
50A	4	10	6	390
50A	5	10	6	340
50A	6	10	6	310
P22				
60B	1	5	99	125
60B	2	5	99	28
50A	3	10	6	347
50A	4	10	6	390
50A	5	10	6	310
50A	6	10	6	340
P23=P24 (X2)				
60B	1	5	60	105
60B	2	5	60	105
50A	3	10	12	140
50A	4	10	12	247
P25=P26 (X2)				
60B	1	5	36	77
50A	2	10	8	107
50A	3	10	8	137
P28				
60B	1	5	10	85
60B	2	5	10	114
PA=PC (X2)				
60B	1	5	20	85
60B	2	12,5	8	143
PB				
60B	1	5	10	77
50A	2	12,5	4	143

RESUMO AÇO CA 50-60			
ACO	BIT (mm)	COMP. (m)	PESO (kg)
5	60B	2619	403
10	50A	173	353
12,5	50A	1042	1003
16	50A	124	198
Peso Total 60B =			403 kg
Peso Total 50A =			1553 kg

Associação de Municípios do Nordeste do Estado de Santa Catarina
 AMUNESC
 Equipe Técnica: TABATA YURI FLORIANO, NATÁLIA DE SOUZA ZATTAR
 Engenheiras Cíveis: FÁBIO BARBI DE ALMEIDA CONSTANCE, DEBORAH TONARI, GABRIELA CARDOSO QUIMARÊS
 Técnico em Edificações: MARCOS STADTLHOFER
 Analista de Projeto: BIANCA SCHWARTZ

AMPLIAÇÃO
MUSEU ARQUEOLÓGICO DE SAMBAQUI
PROJETO ESTRUTURAL

PREFEITURA MUNICIPAL DE JOINVILLE
 Endereço: Rua Dona Francisca, 600 - Centro - Joinville/SC

IDENTIFICAÇÃO E ASSINATURAS
 PROJETO: PREFEITURA MUNICIPAL DE JOINVILLE
 Assinatura: *[assinatura]*
 Assinatura Responsável pelo Projeto: *[assinatura]*
 Assinatura Responsável pela Execução: *[assinatura]*

Prancha: Informações: Nome do Arquivo: Índice: Data: Janeiro/2021
 CONTEUDO DA PRANCHA: DETALHAMENTO DOS PILARES
 NÚMERO PR: EST 06/15