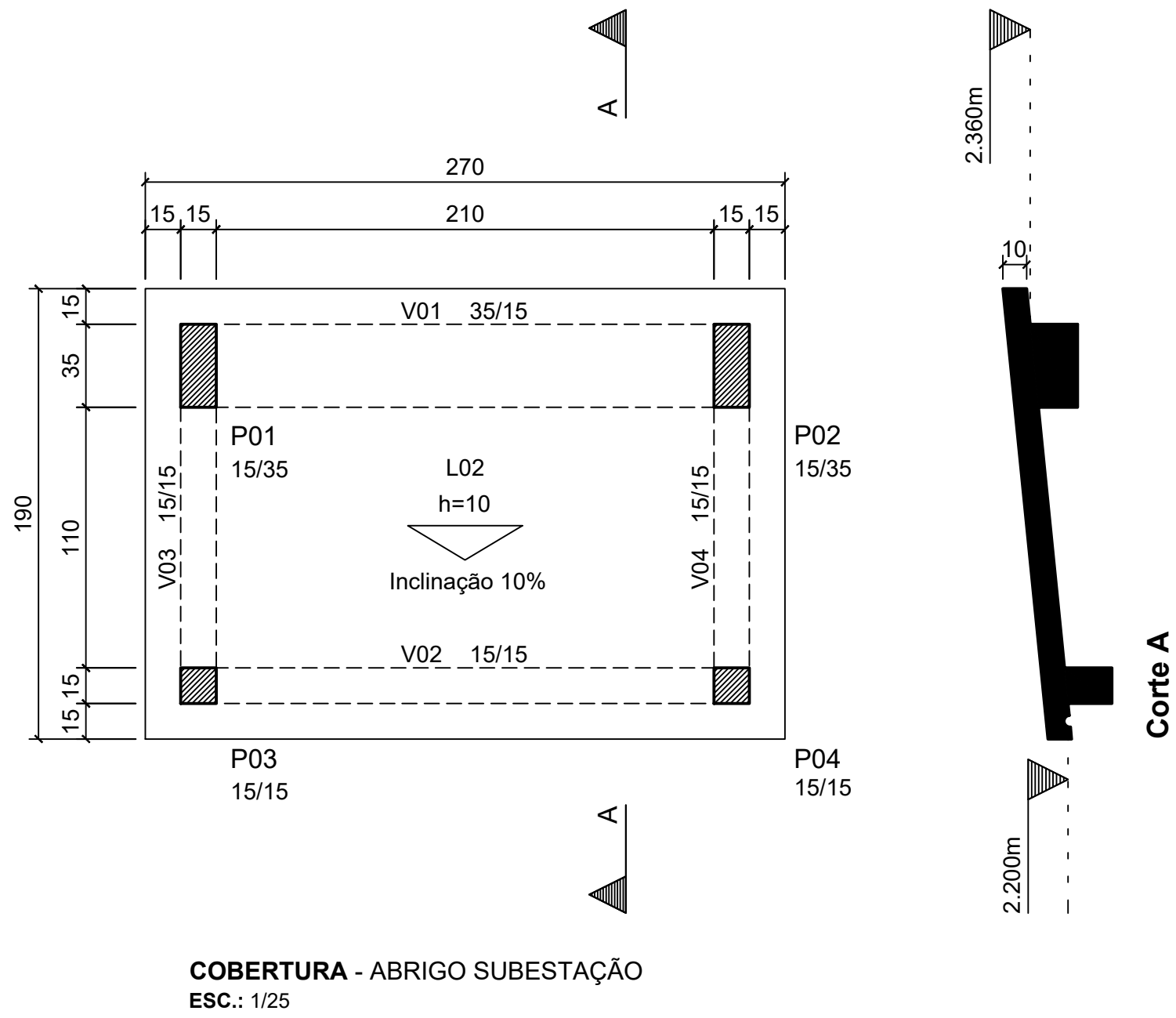
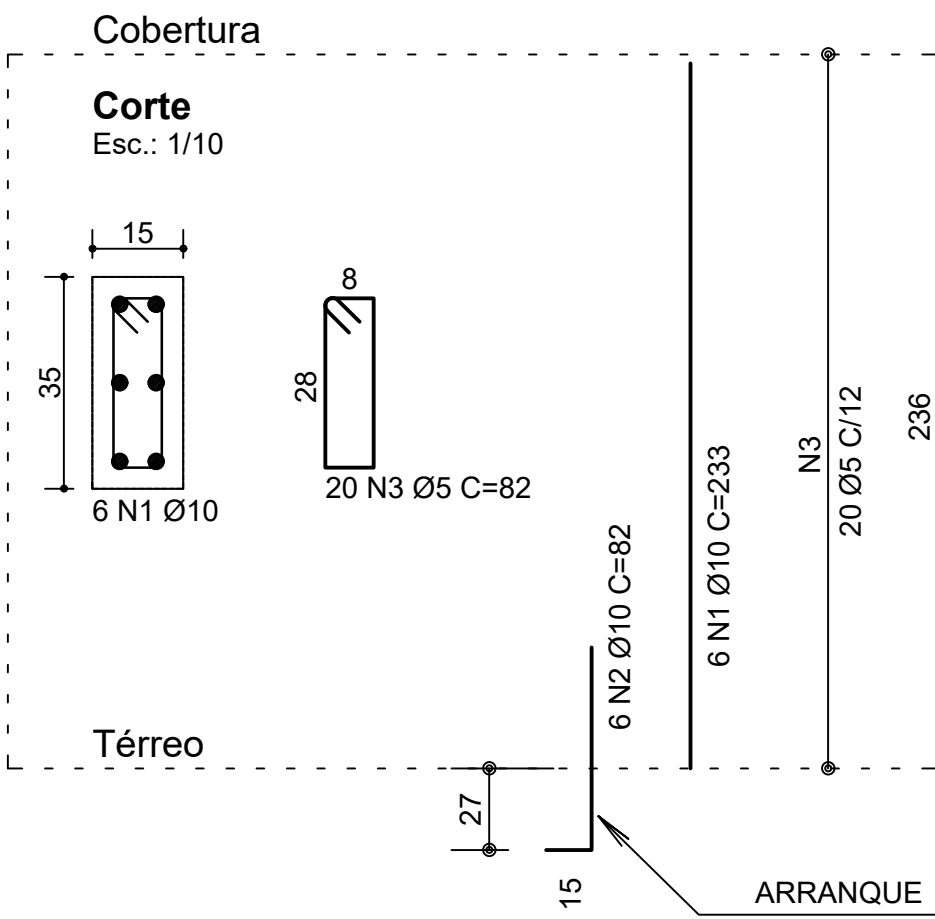


TÉRREO - ABRIGO SUBESTAÇÃO
ESC.: 1/25

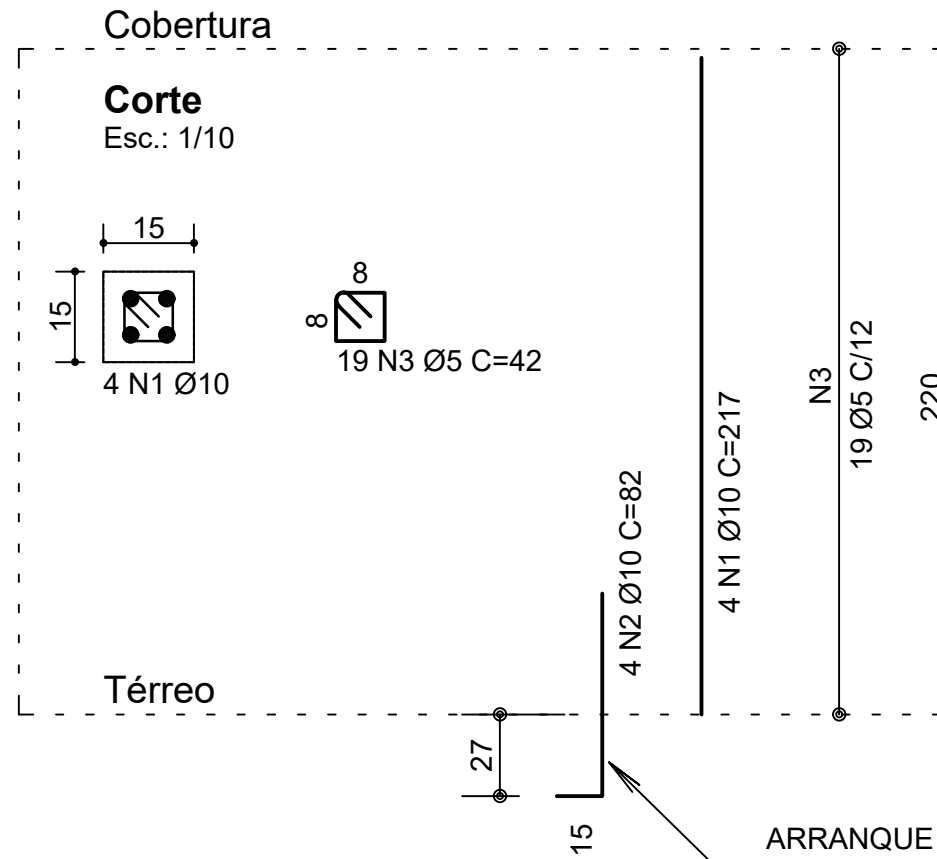


P01=P02 15/35
ESC.: 1/25

PILARES - ABRIGO SUBESTAÇÃO

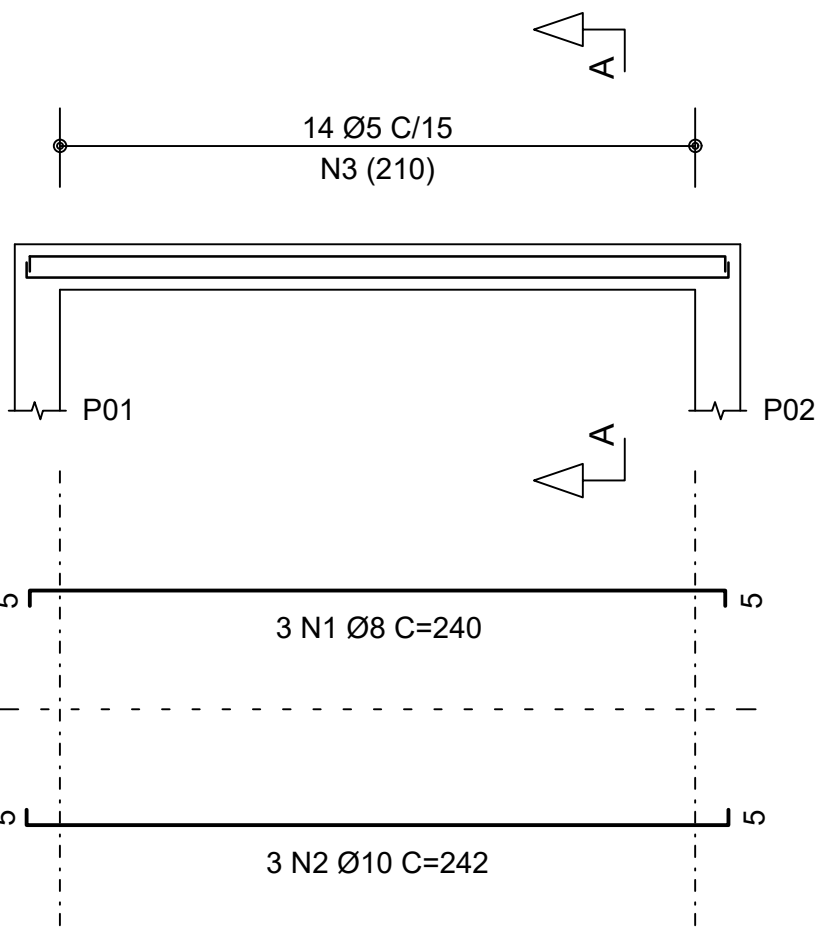


P03=P04 15/15
ESC.: 1/25

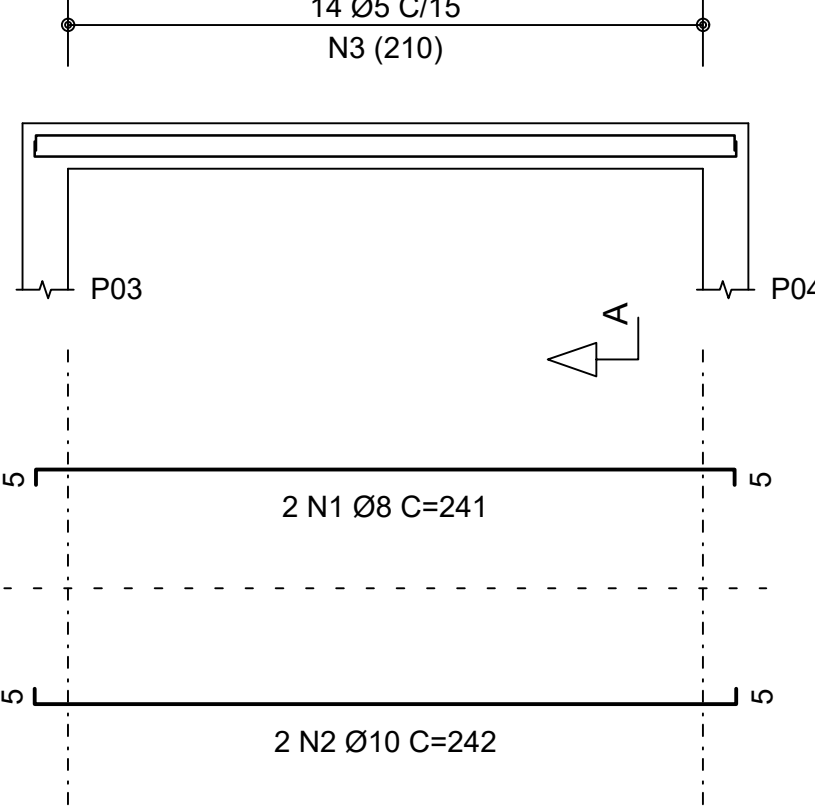
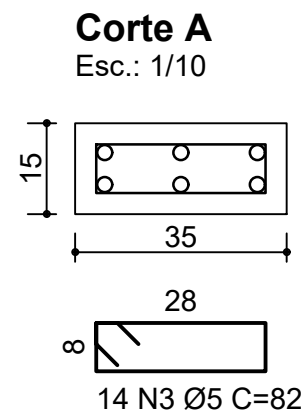


QUANTITATIVO		
MATERIAL	QTDE	UNID
CONCRETO FCK = 25mpa	2,264	M³
AÇO CA60 5,0mm	11,789	KG
AÇO CA50 8,0mm	92,6	KG
AÇO CA50 10,0mm	77,83	KG
MADEIRA PARA CAIXARIA EM CHAPA DE MADEIRA RESINADA	19,65	M²
IMPERMEABILIZANTE ACRÍLICO	7,04	M²
BLOCO DE CONCRETO 14x19x39cm	16,4	M²
CHAPISCO / EMBOÇO / REBOCO	24,64	M²
SELADOR ACRÍLICO PARA PAREDE (2 DEMÃOS)	34,9	M²
TINTA ACRÍLICA PARA PAREDE (2 DEMÃOS)	34,9	M²
GRADIL METÁLICO 200x200cm - PINTURA NA COR AZUL	1	UN

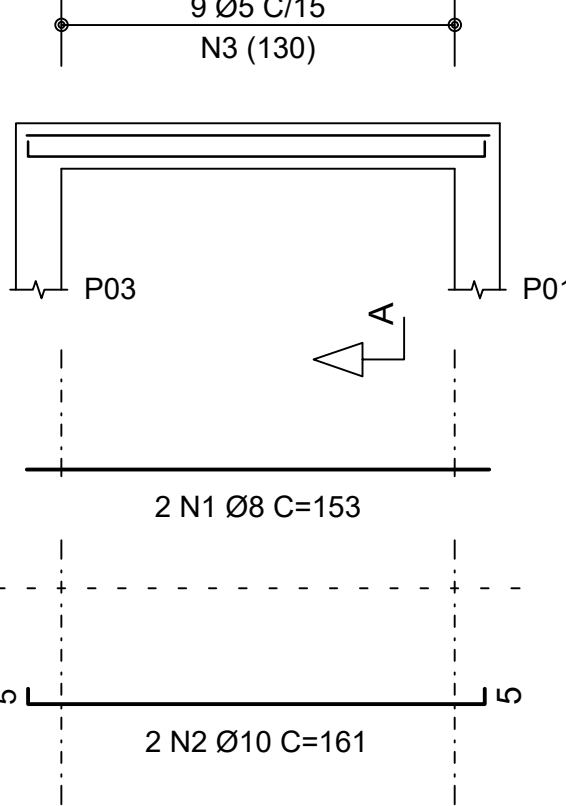
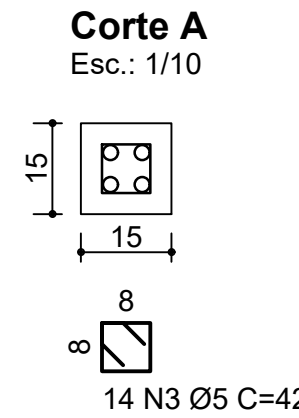
VIGAS - ABRIGO SUBESTAÇÃO



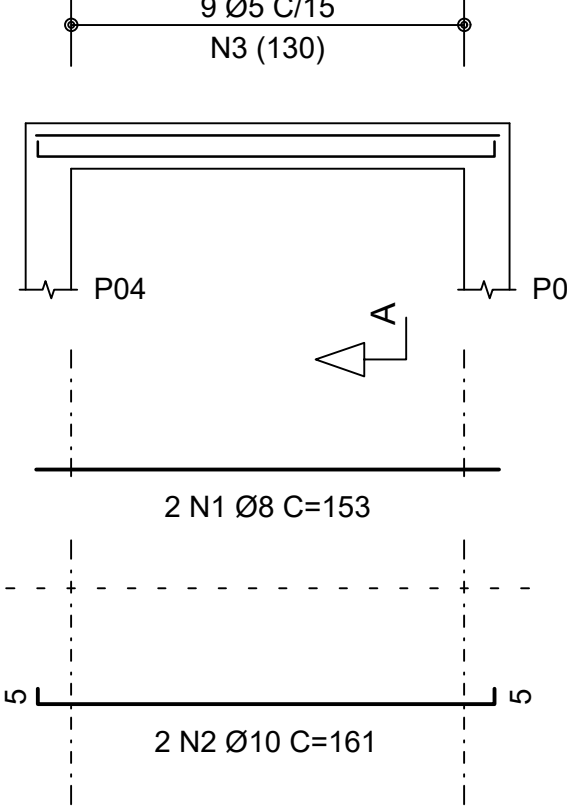
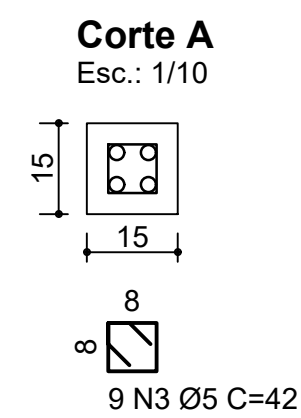
V01 35/15
ESC.: 1/25



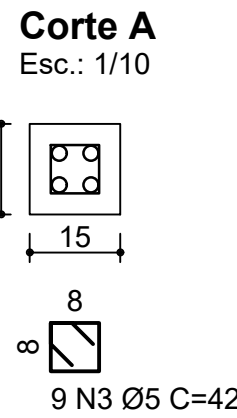
V02 15/15
ESC.: 1/25



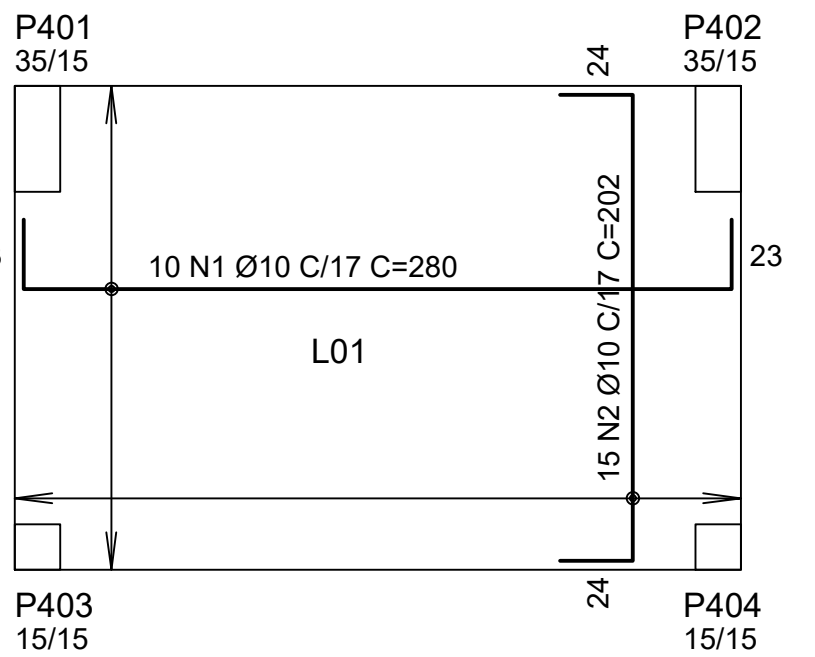
V03 15/15
ESC.: 1/25



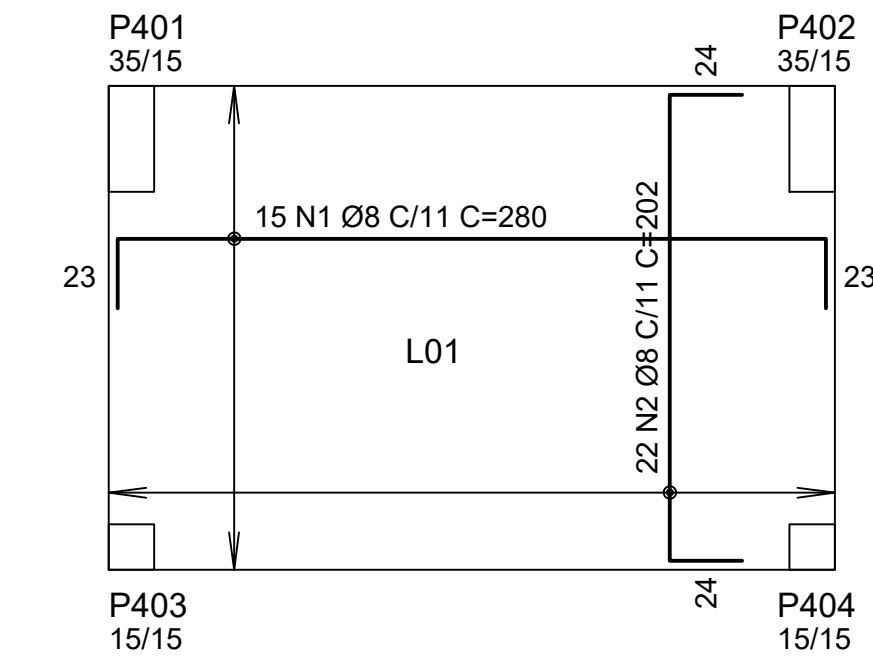
V04 15/15
ESC.: 1/25



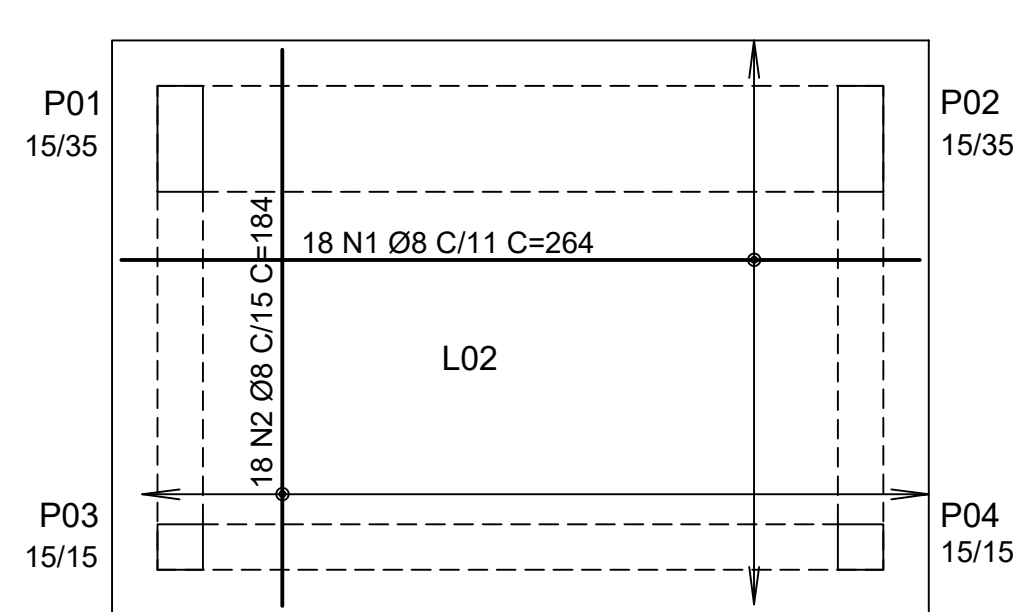
LAJES - ABRIGO SUBESTAÇÃO



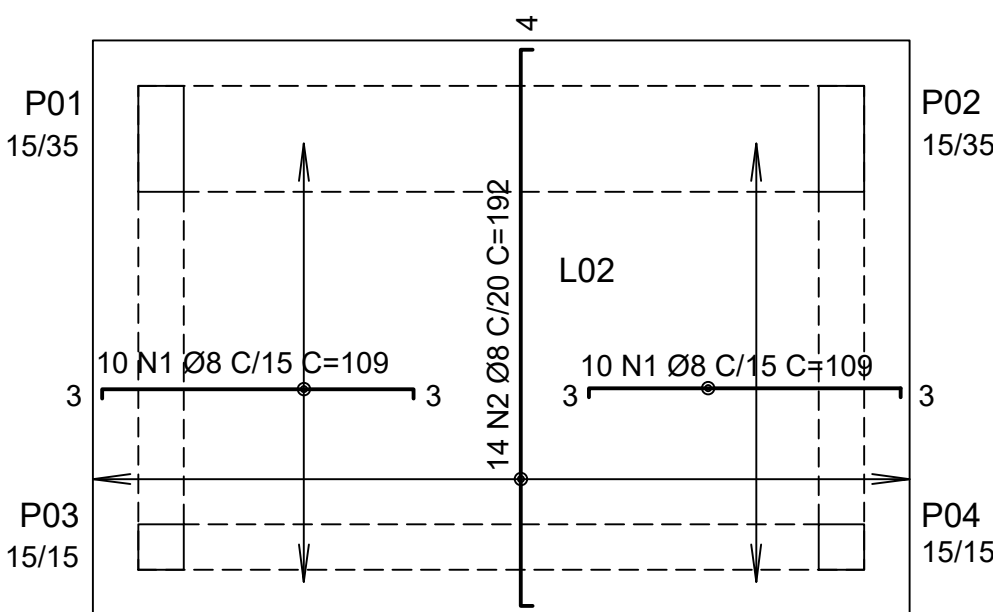
LAJE TÉRREO - ARMADURA POSITIVA
ESC.: 1/25



LAJE TÉRREO - ARMADURA NEGATIVA
ESC.: 1/25



LAJE COBERTURA - ARMADURA POSITIVA
ESC.: 1/25



LAJE COBERTURA - ARMADURA NEGATIVA
ESC.: 1/25

PROPRIETÁRIO	MUNICÍPIO DE JOINVILLE	RESPONSÁVEL TÉCNICO	CARLA TAIS PEREIRA ENGENHEIRA CIVIL CREA/SC 180646-6
EDIFICAÇÃO	SECRETARIA DE EDUCAÇÃO - SED	ENDEREÇO	RUA ITAJAÍ, 390, CENTRO
DESENHO	SETOR DE ENGENHARIA	DATA	11/05/2023
PROJETO	ABRIGO SUBESTAÇÃO	ESCALA	INDICADA
CONTEÚDO	DETALHAMENTO ESTRUTURAL	FOLHA	01/01